



ENVIRONMENT PROTECTION ACT 1970
SECTION 20

LICENCE

VIVA ENERGY REFINING PTY LTD

Holder of

Licence: 46555

Issued: 30/06/1997

Last Amended: 03/06/2016

ACN: 004 303 842

Registered Address: LEVEL 16 720 BOURKE ST
DOCKLANDS VIC 3008

Premises Address: 90 REFINERY RD
CORIO VIC 3214

Scheduled Categories: G03 Oil and Gas Refining

Description: The licence-holder refines crude oil to produce a range of petroleum products. This licence allows for discharges to air and discharges of wastewater to Corio Bay.

.....
QUENTIN COOKE
Team Leader
Development Assessments
Delegate of the Environment Protection Authority

Issued under the *Environment Protection Act 1970*, Section 20

PREAMBLE

Licences

Who we are: The Environment Protection Authority (“EPA”) is an independent statutory authority established under the *Environment Protection Act 1970* (“the Act”). Our purpose is to protect and improve our environment by preventing harm to the environment and human health.

Why we issue licences: EPA is responsible for preventing or controlling pollution (including noise) and improving the quality of the environment. This responsibility includes regulating activities that may present a danger to the environment. One of the tools available to EPA is the licensing of certain scheduled premises that may present a risk to the environment.

Section 20 of the Act requires the occupier of a “scheduled premises” to obtain an EPA licence to discharge, handle, treat or dispose of waste to the environment. These premises are defined in the *Environment Protection (Scheduled Premises and Exemptions) Regulations 2007* (“the Regulations”).

When we issue licences: EPA will issue a licence when satisfied that an applicant has put in place measures to protect the environment. Licences allow activities to occur and set performance outcomes based on a site’s environmental risk. EPA can amend, suspend or revoke a licence in response to changes in standards, site activities or licence holder performance. Licence holders must submit an annual performance statement and pay an annual fee to EPA. All licences and performance statements are publicly available.

Licence information and obligations

For the purposes of this licence “You” means the licence holder identified on the first page of this licence at the “premises” identified on the first page and represented in Schedule 1.

If you object to any of the licence conditions, you may have the decision reviewed by applying in writing to the Registrar, Planning and Environment Division, Victorian Civil and Administrative Tribunal (“VCAT”), 7th Floor, 55 King Street, Melbourne within 21 days of the date of issue. An application fee may be applicable when lodging an appeal with VCAT. Contact VCAT on (03) 9628 9777 for further details on fees associated with an appeal. A copy of the appeal should also be forwarded to the Manager, Development Assessments Unit, Environment Protection Authority, GPO Box 4395, Melbourne, 3001, within 7 days of lodgement of the appeal.

Interested (third) parties may also appeal against the licence within 21 days of the date of issue. The Tribunal will notify you if such appeals are received. If an appeal is lodged, this licence will not come into effect.

Compliance: You must comply at all times with the Act and all policies and regulations administered by EPA. Strict penalties apply for non-compliance with any part of your licence or making a false claim on your annual performance statement.

Licence structure

Structure: Your licence has multiple parts:

- Environmental performance conditions - setting out the performance outcomes you must meet;
- Schedule 1A - locality plan of your premises;
- Schedule 1B - plan of premises (provided by you).

Some types of licences also contain Schedule 1C - final landfill contour plans and/or Schedule 2 - tables specifying wastes that may be accepted at the premises and the associated treatment applied to them.

CONDITIONS

General Conditions

- LI_G1 Waste from the premises must not be discharged to the environment except in accordance with this licence.
- LI_G2 You must immediately notify EPA of non-compliance with any condition of this licence.
- LI_G3 By 30 September each year you must submit an annual performance statement to EPA for the previous financial year in accordance with the Annual Performance Statement Guidelines (EPA Publication 1320).
- LI_G4 Documents and monitoring records used for preparation of the annual performance statement must be retained at the premises for seven years from the date of each statement.
- LI_G5 You must implement a monitoring program that enables you and EPA to determine compliance with this licence.
- LI_G5.1 You must implement a program to assess performance against the intervention level in Schedule B of the State environment protection policy (Air Quality Management) for sulfur dioxide, benzene and particles as PM10.
- LI_G5.4 You must implement a program to assess annually:
(a) Performance against the Design Criteria in Schedule A of the State environment protection policy (Air Quality Management) for fluoride; and
(b) Within a 1500 metre radius of the premises boundary:
(i) any visible injury to vegetation; and
(ii) fluoride levels in samples of forage (dry tissue, unwashed) against an annual mean of 40 µg/g and a maximum of 80 µg/g.

Amenity Conditions

- LI_A1 Offensive odours must not be discharged beyond the boundaries of the premises.
- LI_A2 Unacceptable noise (including vibration) must not be emitted beyond the boundaries of the premises.
- LI_A3 Nuisance dust must not be discharged beyond the boundaries of the premises.

Waste Acceptance Conditions

Licence does not have any waste acceptance conditions.

Waste Management Conditions

Licence does not have any waste management conditions.

Landfill Conditions

Licence does not have any landfill conditions.

Air Conditions

LI_DA1 Discharge of waste to air must be in accordance with the 'Discharge to Air' Table.

Discharge to Air Table - Maximum Discharge Rates

Discharge Point No	Description of Discharge Points	Indicator	Limit Type	Unit	Discharge Limit
BUBBLE	All Air Discharge Points	Benzene	Bubble	to/yr	4.5
		Carbon monoxide	Bubble	g/min	2,900
		Oxides of nitrogen (as NO ₂)	Bubble	g/min	8,800
		Sulfur dioxide	Bubble	to/yr	4,475
DP10	Mogas stack	Fluorine compounds (as HF)	Maximum	g/min	140
DP26	Cracker stack	Particles	Maximum	g/min	1,400
		Particles (as PM ₁₀)	Maximum	g/min	1,000
TANKS	Emissions from Tanks and VRU (annual ave	Total volatile organic compounds	Maximum	to/yr	450

g/min = grams/minute
to/yr = tonnes/year

LI_DA1.12 Air emissions from all discharge points combined must not exceed 12,900 grams per minute of sulfur dioxide.

LI_DA1.13 Air emissions of sulfur dioxide must not exceed :
 (a) 5,100 grams per minute from all boilers and heaters combined being the sum of DP's 4, 5, 9, 10, 11, 12, 21 and 23;
 (b) 2,000 grams per minute from Discharge Point 25; and
 (c) 10,300 grams per minute from Discharge Point 26.

LI_DA2.1 Visible emissions to air other than steam must not be discharged from the premises, except in accordance with condition LI_DA1.

Water Conditions

LI_DW1 Stormwater discharged from the premises must not be contaminated with waste.

LI_DW2 Discharge of waste to surface waters must be in accordance with the 'Discharge to Water' Table.

Discharge to Water Table - Discharge Limits

Discharge Point No	Description of Discharge Points	Indicator	Limit Type	Unit	Discharge Limit
W1	Cooling water to Corio Bay	Flow Rate	Mean Daily flow	ML/D	228
		Benzene, toluene, ethylbenzene, and xyle	Annual Median	mg/l	0.01
		Benzene, toluene, ethylbenzene, and xyle	Maximum	mg/l	0.7
		Copper	Annual Median	mg/l	0.006
		Copper	Maximum	mg/l	0.1
		Dissolved oxygen as mg/L	Minimum	mg/l	5
		Nickel	Annual Median	mg/l	0.07
		Nickel	Maximum	mg/l	0.2
		Suspended solids	Above Ambient	mg/l	5
		Temperature	Maximum	deg	35
		Temperature above ambient	Above Ambient	deg	12
		Total organic carbon	Annual Median	mg/l	2
		Total organic carbon	Above Ambient	mg/l	10
		Total residual chlorine	Maximum	mg/l	0.1
		Zinc	Annual Median	mg/l	0.02
Zinc	Maximum	mg/l	0.5		
W3	TA Outfall	Flow Rate	Mean Daily flow	ML/D	2
		Dissolved oxygen as mg/L	Minimum	mg/l	5
		Suspended solids	Above Ambient	mg/l	5
		Temperature	Maximum	deg	35
		Temperature above ambient	Above Ambient	deg	12
		Total organic carbon	Annual Median	mg/l	2
		Total organic carbon	Above Ambient	mg/l	10
		Total residual chlorine	Maximum	mg/l	0.2
W4	BMC Outfall	Flow Rate	Mean Daily flow	ML/D	35
		Suspended solids	Above Ambient	mg/l	5
		Temperature	Maximum	deg	35
		Temperature above ambient	Above Ambient	deg	12
		Total organic carbon	Annual Median	mg/l	2
		Total organic carbon	Above Ambient	mg/l	10
		Total residual chlorine	Maximum	mg/l	0.2
W5	Area North Outfall	Flow Rate	Mean Daily flow	ML/D	85
		Benzene, toluene, ethylbenzene, and xyle	Annual Median	mg/l	0.01
		Benzene, toluene, ethylbenzene, and xyle	Maximum	mg/l	0.7
		Copper	Annual Median	mg/l	0.006
		Copper	Maximum	mg/l	0.1
		Dissolved oxygen as mg/L	Minimum	mg/l	5
		Nickel	Annual Median	mg/l	0.07
		Nickel	Maximum	mg/l	0.2
		Suspended solids	Above Ambient	mg/l	5
		Temperature	Maximum	deg	35

Discharge Point No	Description of Discharge Points	Indicator	Limit Type	Unit	Discharge Limit
		Temperature above ambient	Above Ambient	deg	12
		Total organic carbon	Annual Median	mg/l	2
		Total organic carbon	Above Ambient	mg/l	10
		Total residual chlorine	Maximum	mg/l	0.1
		Zinc	Annual Median	mg/l	0.02
		Zinc	Maximum	mg/l	0.5

deg = Degree

mg/l = Milligrams/litre

ML/D = Megalitre per day

LI_DW2.5 Discharge of wastewater must not contain visible floating oil.

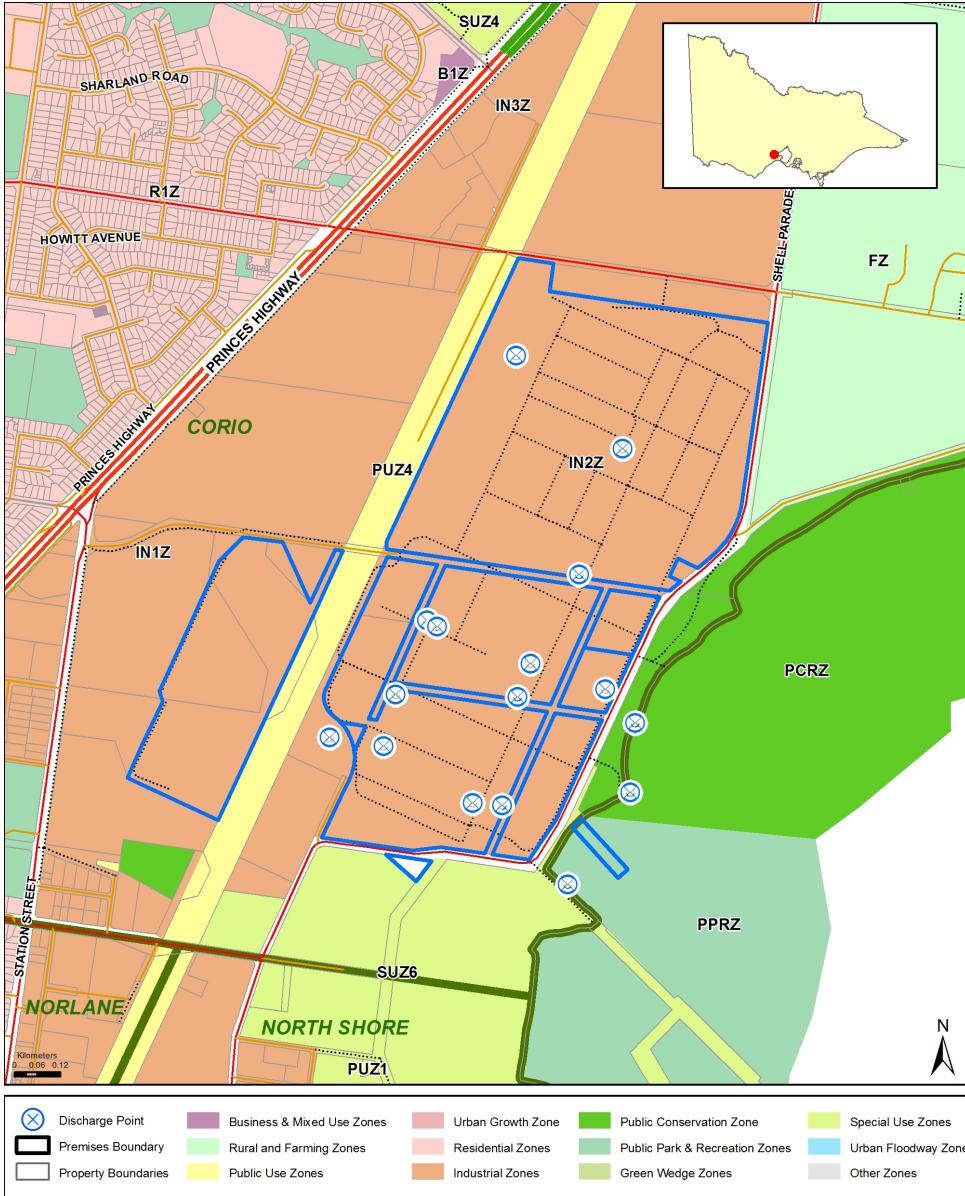
LI_DW3.1.1 The mixing zones, as shown in Schedule 1, extend for
 (a) a radius of 500 metres from discharge point W1,
 (b) a radius of 100 metres from discharge point W3,
 (c) a radius of 80 metres from discharge point W4, and
 (d) a radius of 120 metres from discharge point W5.

LI_DW4 You must install and maintain signage showing the (a) extent of the mixing zone, (b) your name, (c) EPA licence number and (d) discharge point number.

Land Conditions

LI_DL1 You must not contaminate land or groundwater.

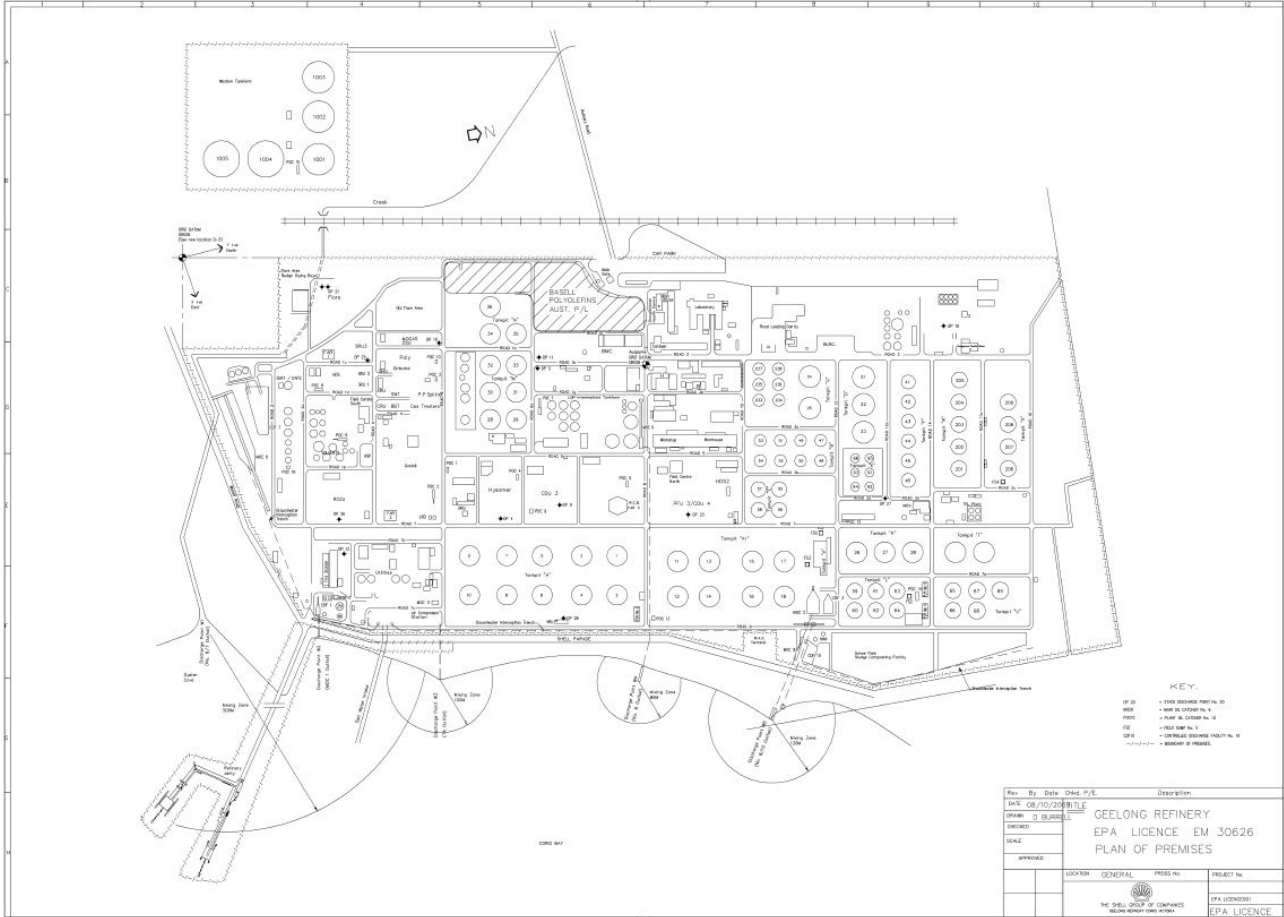
SCHEDULE 1A - LOCALITY PLAN



Licence:	46555
Company Name:	VIVA ENERGY REFINING PTY LTD
ACN:	004 303 842
Premises Address:	90 REFINERY RD, CORIO VIC 3214
Issued:	30/06/1997
Last Amended:	03/06/2016

Before relying on the information in this map, users should carefully evaluate its accuracy, currency, completeness and relevance for their purposes, and should obtain any appropriate professional advice relevant to their particular circumstances.

SCHEDULE 1B - PREMISES PLAN



Licence:	46555
Company Name:	VIVA ENERGY REFINING PTY LTD
ACN:	004 303 842
Premises Address:	90 REFINERY RD, CORIO VIC 3214
Issued:	30/06/1997
Last Amended:	03/06/2016

Before relying on the information in this map, users should carefully evaluate its accuracy, currency, completeness and relevance for their purposes, and should obtain any appropriate professional advice relevant to their particular circumstances.